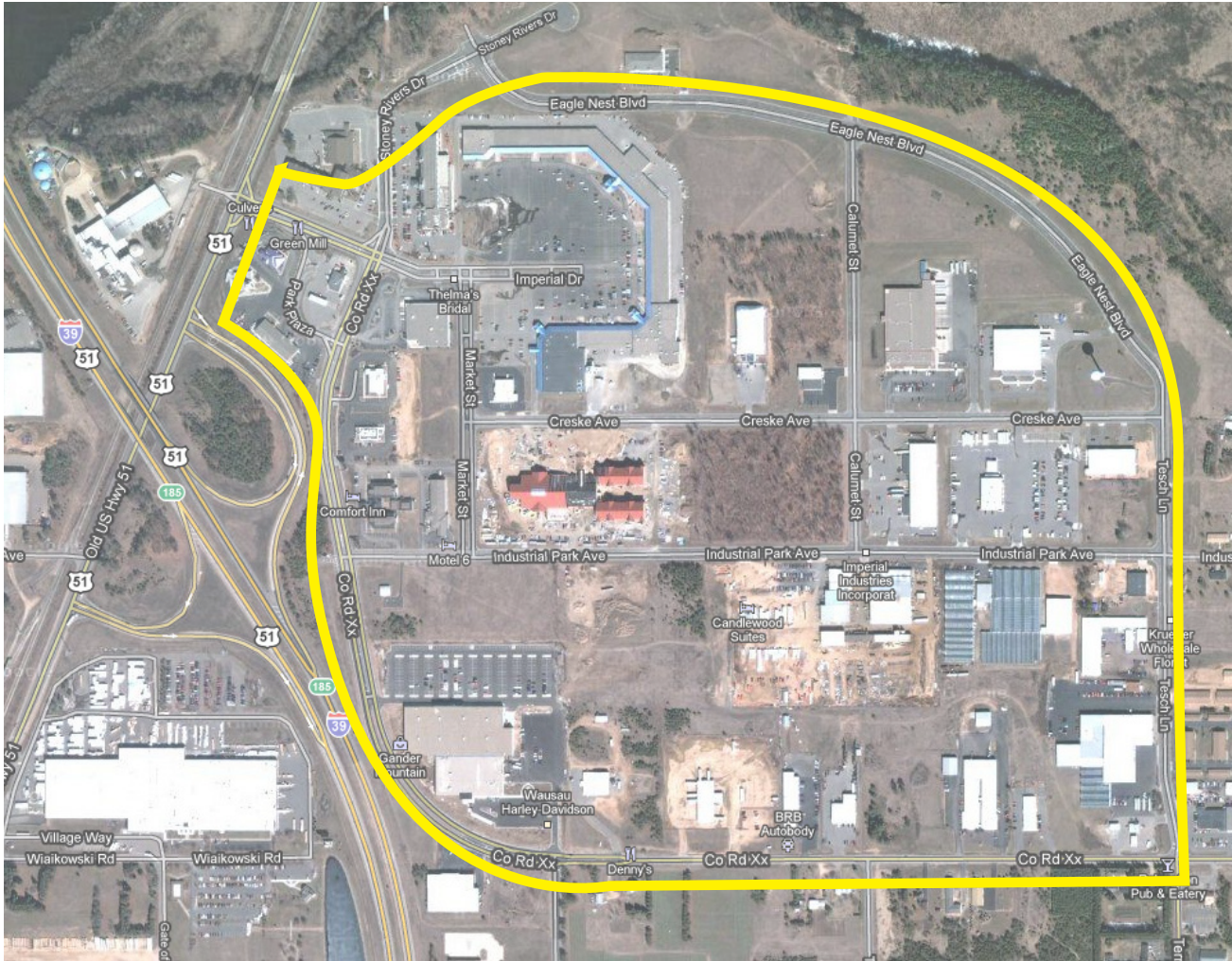


# ← SITE 35



LARGE ITEMS: move to a visible area near the road. These items will be picked up later by other forces.

## **CEDAR CREEK AREA AND AROUND**

Walk the streets, parking lots, and open area in and around Cedar Creek. Check Cty Rd XX on both sides to Tesch Ln. Debris will be found in undeveloped areas, along fences, in landscaping areas, parking lots, etc.

### **Safety/Caution: High traffic, moderate speed**

- Establish eye contact with motorists when working near or crossing the traffic lanes
- Please do not pick up inside of state highway fence lines, and only pick up alongside (not in) roadways
- Adults only in center boulevard areas and along all traffic lanes
- Children should be under the direct supervision of an adult at all times. Pay particular attention around ponds and drainage ditches.
- Handle glass and other sharp objects with care. When in doubt, do not pick it up.
- Watch blind corners around building and road entrances.
- Watch for trains in railroad zones.