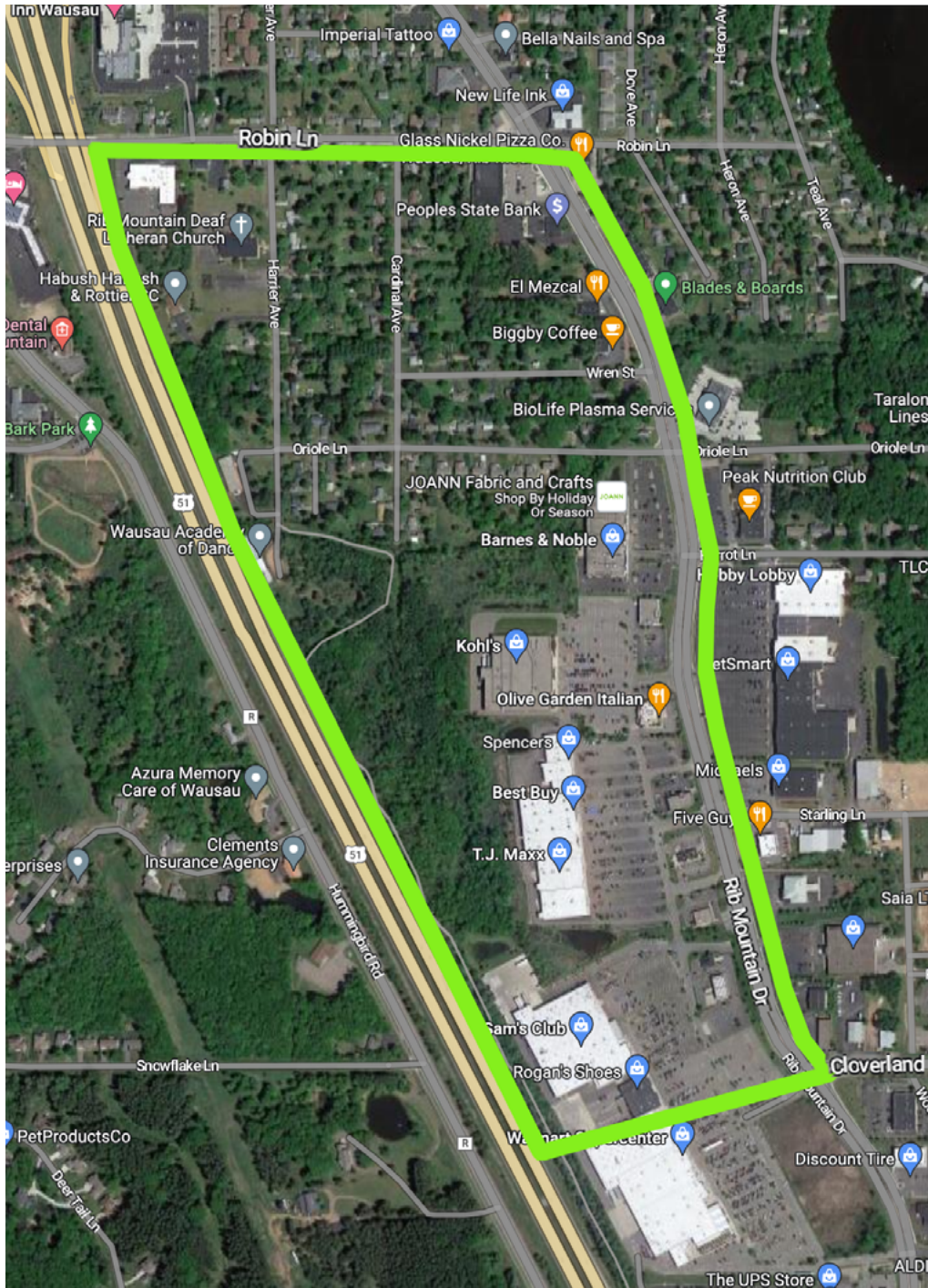


# ← SITE 16



**RIB MOUNTAIN DR SOUTH AT LAMB'S TO CLOVERLAND LN**  
Walk Rib Mountain Dr both sides. Clean debris behind and along stores on the west side to include along fence line to Hwy 51.

## **Safety/Caution: High traffic, moderate speed**

- Establish eye contact with motorists when working near or crossing the traffic lanes
- Please do not pick up inside of state highway fence lines, and only pick up alongside (not in) roadways
- Adults only in center boulevard areas and along all traffic lanes
- Children should be under the direct supervision of an adult at all times. Pay particular attention around ponds and drainage ditches.
- Handle glass and other sharp objects with care. When in doubt, do not pick it up.
- Watch blind corners around building and road entrances.
- Watch for trains in railroad zones.