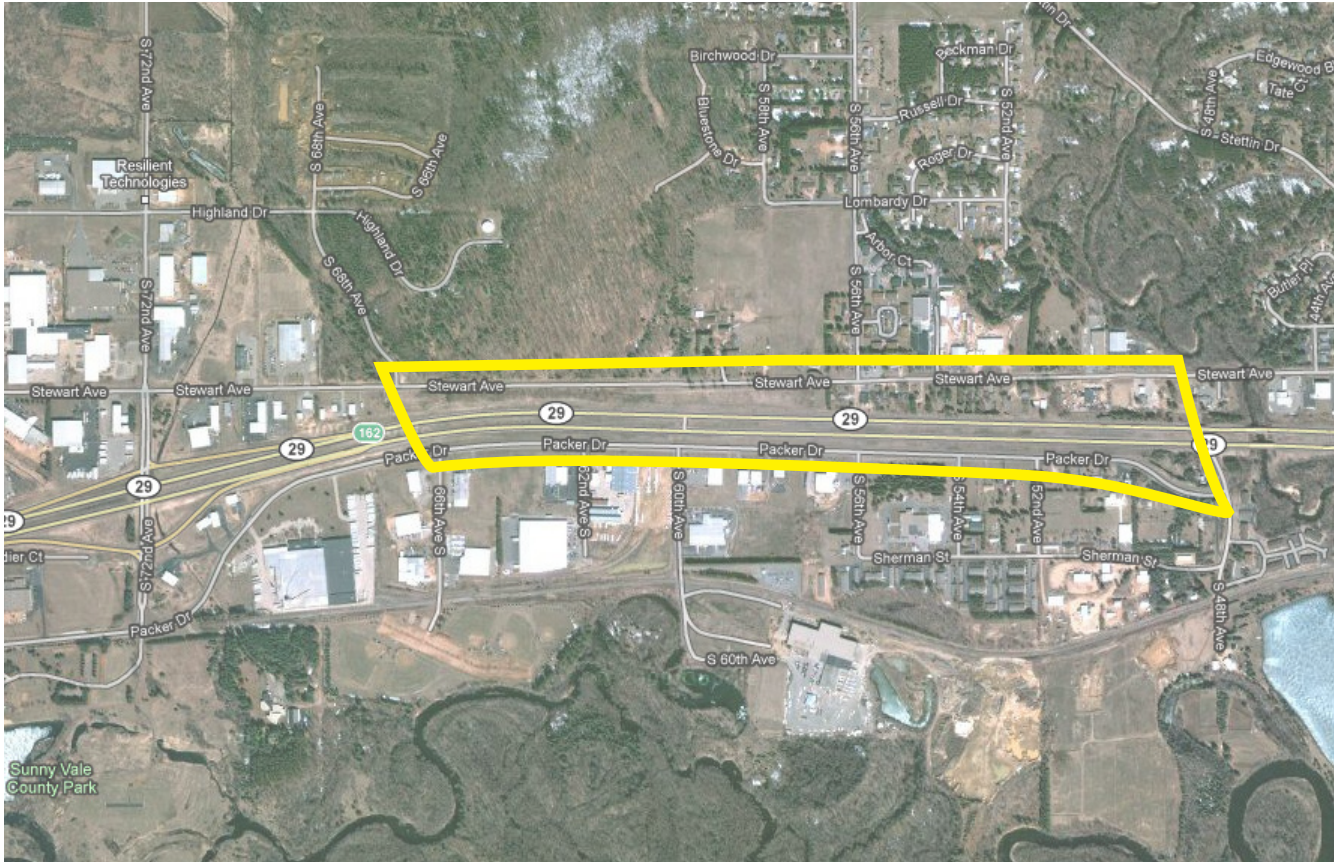


←SITE 10



PRESENTED BY THE
GHIDORZI FOUNDATION

LARGE ITEMS: move to a visible area near the road. These items will be picked up later by other forces.

Walk Stewart Ave from 48th to 66th Ave and walk Packer Drive south of Hwy 29 from 66th to 48th. Debris will be along fence line to Hwy 29 both sides and in ditch areas. Check businesses along Stewart Ave South. (Respect owners' wishes as requested).

Safety/Caution: High traffic area and high speed

- Establish eye contact with motorists when working near or crossing the traffic lanes
- Please do not pick up inside of state highway fence lines, and only pick up alongside (not in) roadways
- Adults only in center boulevard areas and along all traffic lanes
- Children should be under the direct supervision of an adult at all times. Pay particular attention around ponds and drainage ditches.
- Handle glass and other sharp objects with care. When in doubt, do not pick it up.
- Watch blind corners around building and road entrances.
- Watch for trains in railroad zones.