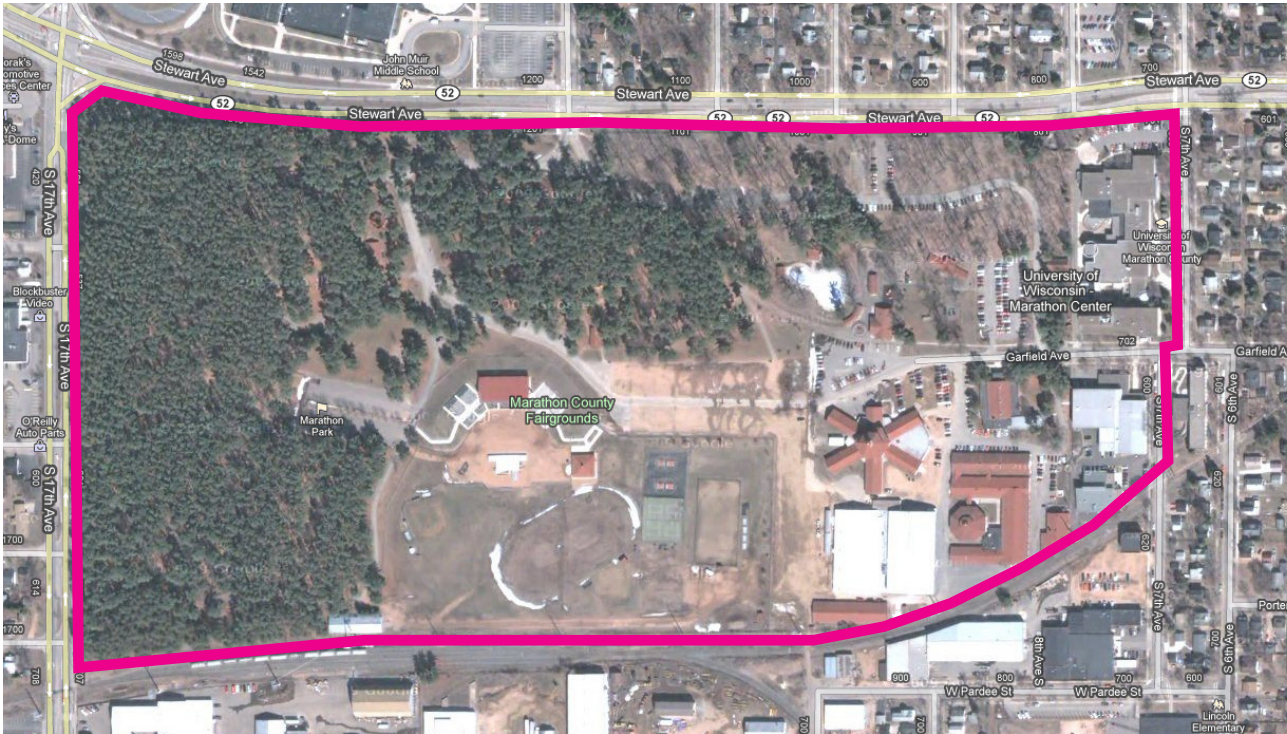


← SITE 13



MARATHON PARK AND UNIVERSITY CAMPUS

Walk the entire park and campus. Debris smagble along buildings, parking areas and along fence.

Note - other groups are picking up along the outside of the fence along the 17th Ave and Stewart). Check along south and east fence areas especially at entry points.

Safety/Caution: Low traffic, slow speed

- Establish eye contact with motorists when working near or crossing the traffic lanes
- Please do not pick up inside of state highway fence lines, and only pick up alongside (not in) roadways
- Adults only in center boulevard areas and along all traffic lanes
- Children should be under the direct supervision of an adult at all times. Pay particular attention around ponds and drainage ditches.
- Handle glass and other sharp objects with care. When in doubt, do not pick it up.
- Watch blind corners around building and road entrances.
- Watch for trains in railroad zones.



LARGE ITEMS: move to a visible area near the road. These items will be picked up later by other forces.

