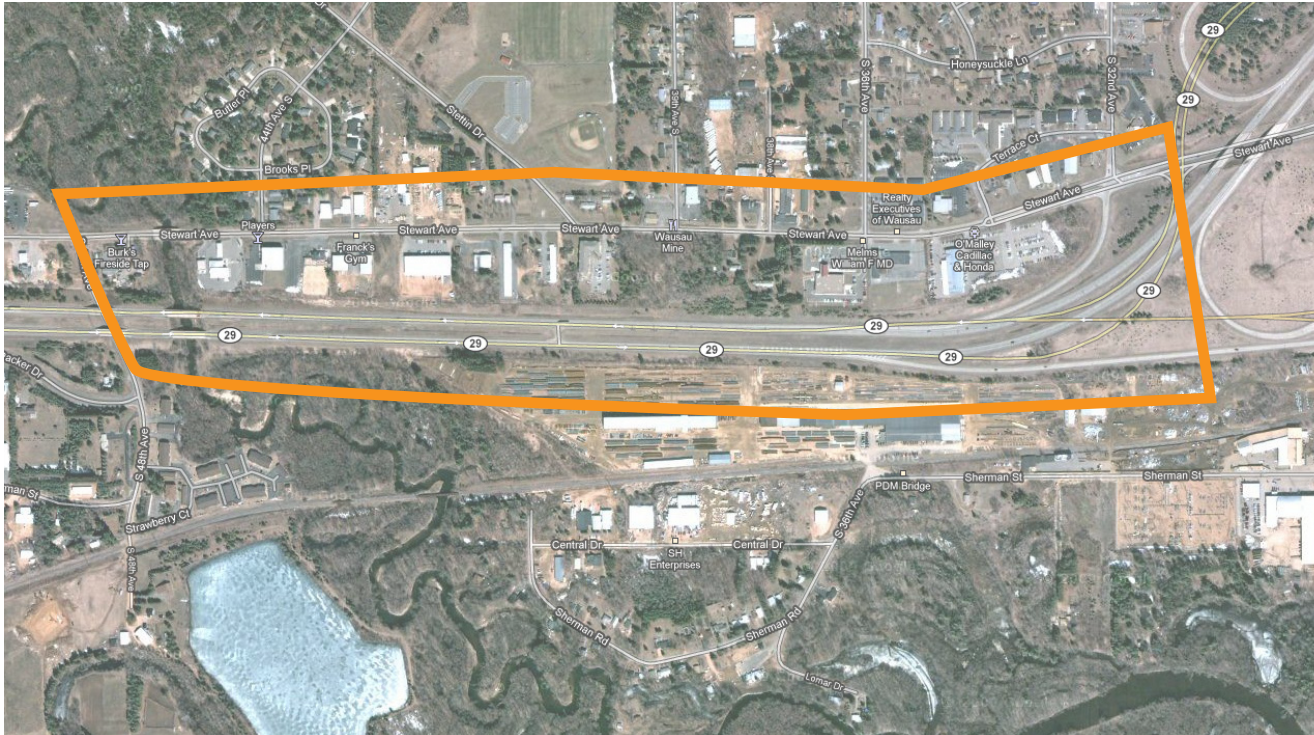


← SITE 9



LARGE ITEMS: move to a visible area near the road. These items will be picked up later by other forces.

STEWART AVE (BY WAUSAU MINE) FROM 32ND AVE TO 48TH AND BOTH SIDES OF HWY 29

Walk Stewart Ave both sides. Include area along fence to Hwy 29 both sides. This includes areas behind buildings along Stewart Ave to 48th Ave. Access south fence line of Hwy 29 from 28th Ave and return by the same route. Little Rib River will prevent access west to 48th Ave.

Note - debris will be located in undeveloped ditch area and along fences

Safety/Caution: High traffic area and high speed

- Establish eye contact with motorists when working near or crossing the traffic lanes
- Please do not pick up inside of state highway fence lines, and only pick up alongside (not in) roadways
- Adults only in center boulevard areas and along all traffic lanes
- Children should be under the direct supervision of an adult at all times. Pay particular attention around ponds and drainage ditches.
- Handle glass and other sharp objects with care. When in doubt, do not pick it up.
- Watch blind corners around building and road entrances.
- Watch for trains in railroad zones.