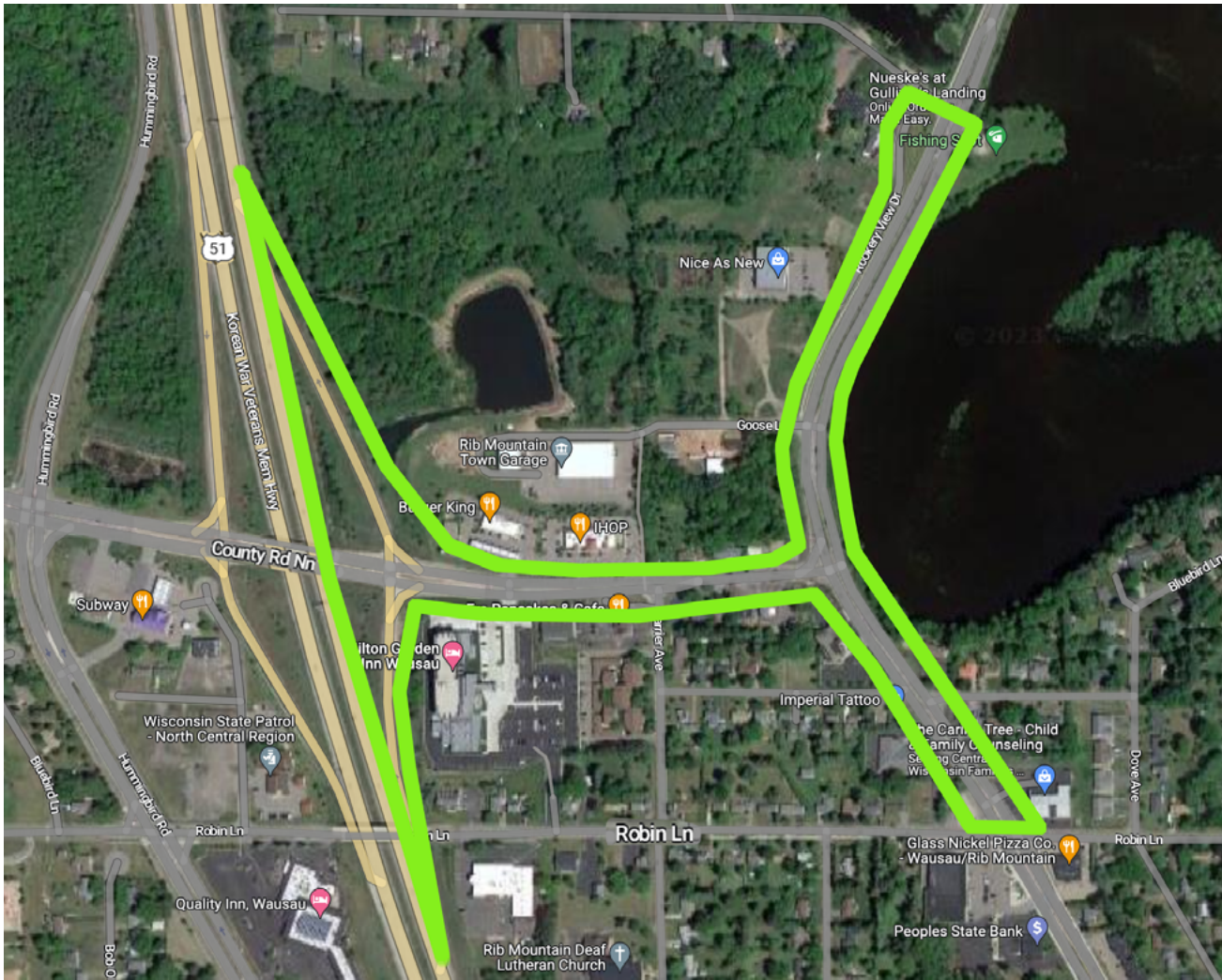


# ← SITE 15



**RIB MOUNTAIN DR SOUTH OF GULLIVER'S TO LAMB'S AND COUNTY RD NN TO THE EAST OF HWY 51**  
Walk Rib Mountain Dr on both sides from Gulliver's south to intersection by Lamb's. Check areas along Lake Wausau.

Check along County Road NN both sides to Hwy 51. Include the east side on/off ramps to Hwy 51.

### **Safety/Caution: High traffic area and high speed**

- Establish eye contact with motorists when working near or crossing the traffic lanes
- Please do not pick up inside of state highway fence lines, and only pick up alongside (not in) roadways
- Adults only in center boulevard areas and along all traffic lanes
- Children should be under the direct supervision of an adult at all times. Pay particular attention around ponds and drainage ditches.
- Handle glass and other sharp objects with care. When in doubt, do not pick it up.
- Watch blind corners around building and road entrances.
- Watch for trains in railroad zones.