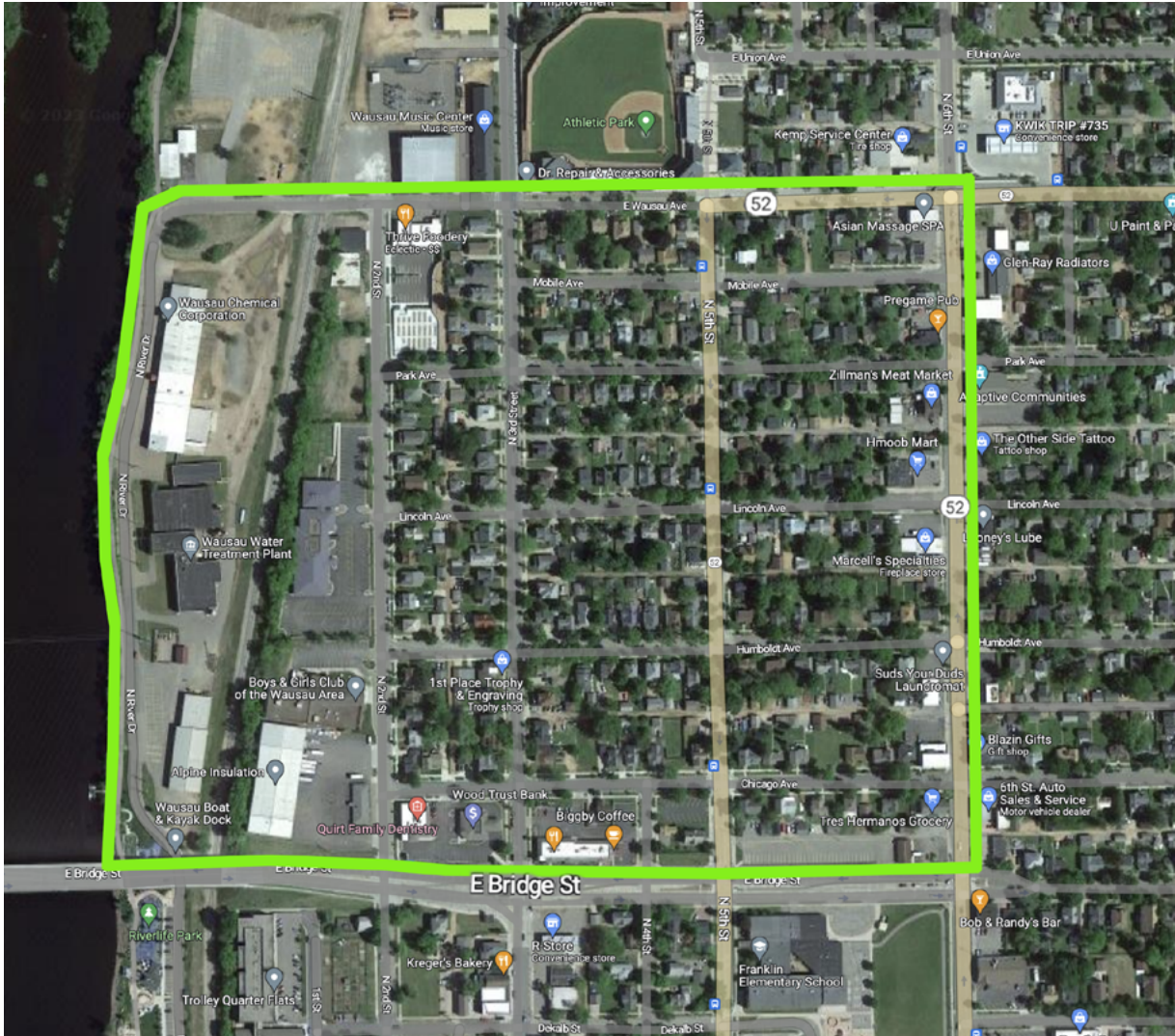


← SITE 20



NORTH OF BRIDGE ST EAST SIDE OF THE RIVER TO ATHLETIC PARK

Walk all streets north of Bridge St between the river to 6th St to Athletic Park. Walk around Athletic Park including open areas north of the park. Debris will be in tall grass, along railroad tracks and adjacent to the river.

Safety/Caution: High traffic, moderate speed

- Establish eye contact with motorists when working near or crossing the traffic lanes
- Please do not pick up inside of state highway fence lines, and only pick up alongside (not in) roadways
- Adults only in center boulevard areas and along all traffic lanes
- Children should be under the direct supervision of an adult at all times. Pay particular attention around ponds and drainage ditches.
- Handle glass and other sharp objects with care. When in doubt, do not pick it up.
- Watch blind corners around building and road entrances.
- Watch for trains in railroad zones.