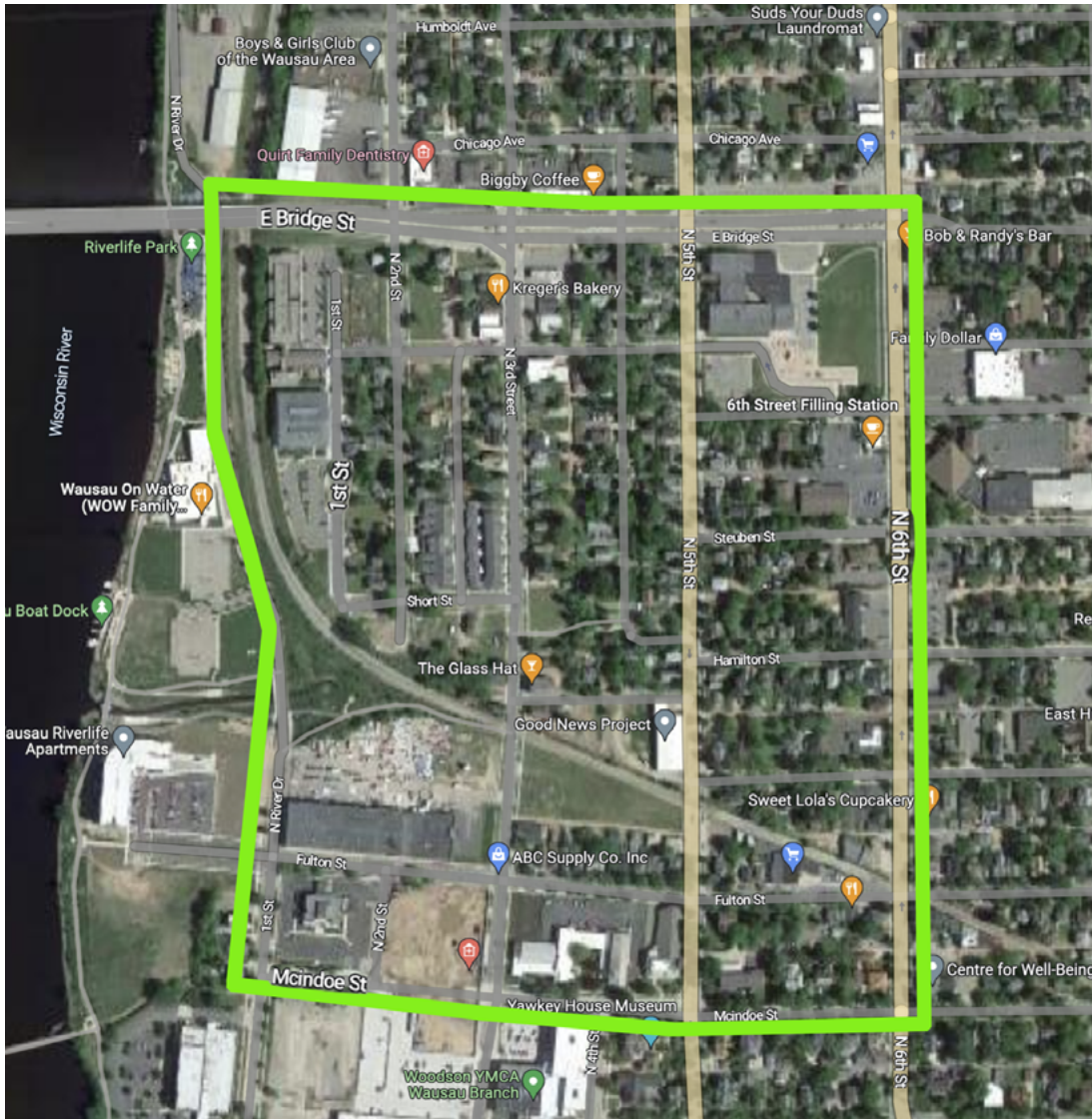


← SITE 21



NORTH DOWNTOWN FROM MCINDOE ST. TO BRIDGE ST ALONG EAST SIDE OF RIVER
Walk all streets north of McIndoe to Bridge St between the river to 6th St. Walk open areas by the railroad tracks and adjacent to the river. Debris will be along fences, tall grass and around buildings.

Safety/Caution: High traffic, moderate speed

- Establish eye contact with motorists when working near or crossing the traffic lanes
- Please do not pick up inside of state highway fence lines, and only pick up alongside (not in) roadways
- Adults only in center boulevard areas and along all traffic lanes
- Children should be under the direct supervision of an adult at all times. Pay particular attention around ponds and drainage ditches.
- Handle glass and other sharp objects with care. When in doubt, do not pick it up.
- Watch blind corners around building and road entrances.
- Watch for trains in railroad zones.