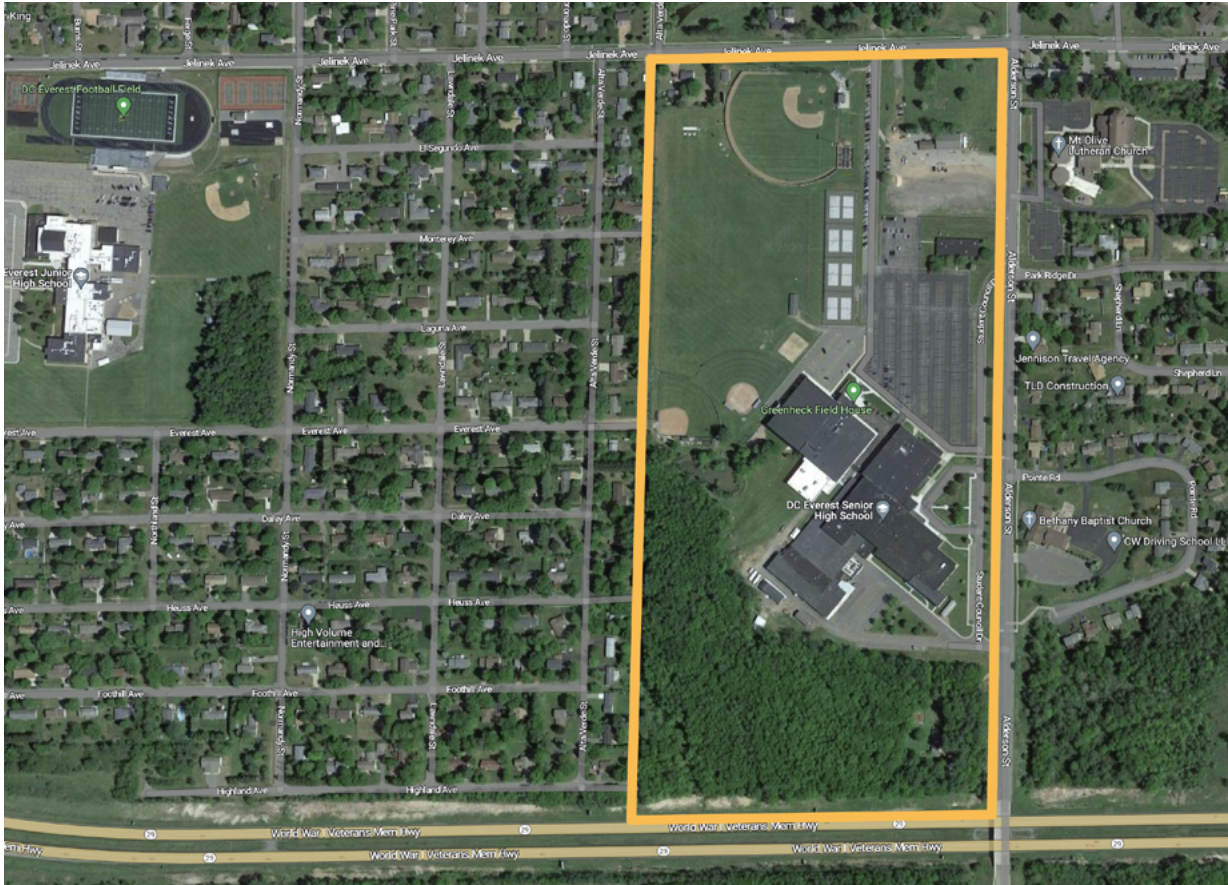


# ← SITE 31



## DC EVEREST SENIOR HIGH SCHOOL GROUNDS

From Jelinek South to State Hwy 29 on the south and between Alderson and the West school property line.

### **Safety/Caution: Low traffic, slow speed**

- Establish eye contact with motorists when working near or crossing the traffic lanes.
- Please do not pick up inside of state highway fence lines, and only pick up alongside (not in) roadways.
- Adults only in center boulevard areas and along all traffic lanes.
- Children should be under the direct supervision of an adult at all times. Pay particular attention around ponds and drainage ditches.
- Handle glass and other sharp objects with care. When in doubt, do not pick it up.
- Watch blind corners around building and road entrances.
- Watch for trains in railroad zones.

